

Managing Mobility in the Atlanta Region

A Strategic update to the human services
transportation plan



ATLANTA REGIONAL COMMISSION

regional impact + local relevance

Update Process

- Updating the HST Plan
 - HST Plan Developed and Adopted by ARC 2010
 - Updated in 2013
- HST Update Process
 - HST Advisory Committee
 - Work Sessions
 - Public Outreach Sessions



ATLANTA REGIONAL COMMISSION

regional impact + local relevance

Plan Approach

- Strategic approach for local level action
 - Needs Assessment
 - Targeted Improvements
- Focuses On
 - Education and Training
 - Integration with local-level funding mechanisms
 - Connectivity between mobility management and human services transportation



ATLANTA REGIONAL COMMISSION

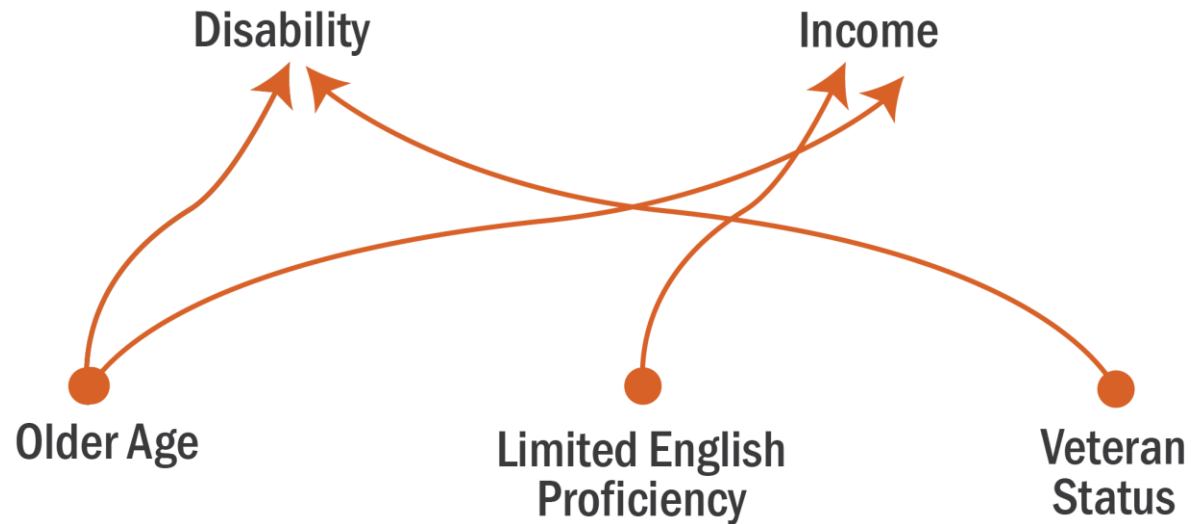
regional impact + local relevance

HST Populations

**Primary
Characteristics**

**Secondary
Characteristics**

(heighten risk for
primary characteristics)



ATLANTA REGIONAL COMMISSION

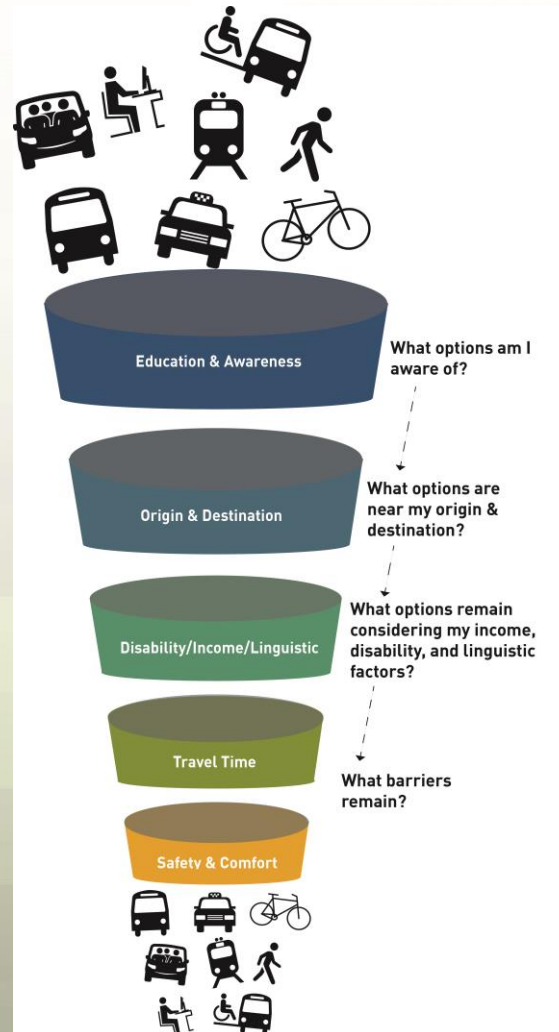
regional impact + local relevance

Needs Assessment

- Review of HST transportation options
- Review of potential barriers



Funneling of Options



ATLANTA REGIONAL COMMISSION

regional impact + local relevance

Targeted Improvements

Improvement Strategies focused on components of the decision-making process, by mode



ATLANTA REGIONAL COMMISSION

regional impact + local relevance

Lastly

- Regional Impact
 - Improved Customer Experience
 - Resource Efficiencies
- Projects Reviewed for Consistency with HST
- Implementation of HST Projects

<http://www.atlantaregional.com/transportation/human-services-transportation>

Lori Sand

lsand@atlantaregional.com

404-463-3269



ATLANTA REGIONAL COMMISSION

regional impact + local relevance